

Hostel Accommodation

Boys and Girls hostels are available at campus level. The hostels are very much secured. All the facilities are very close to the hostels. Rooms with attached bathrooms and conducive environment for study are provided.

Hostel Facility

Hostels Type	No. of rooms	Total No. of Students accommodated
Boys	127	509
Girls	129	304

Facilities provided in Hostel

- Recreation facilities
- Fully equipped gymnasium
- Computer facility including Internet access with broadband connection and Wi-Fi facility
- Medical facilities: with provision of sick room and Ambulance for medical emergency.
- Medical help desk is available 24 hrs in campus for hostel students
- Library: The hostel buildings have provision for reading and studying (magazines, newspapers, periodicals, etc.). Through Wi-Fi, students can download E-journal papers from institute accession.
- Hygiene facilities: Cleanliness of all facilities is maintained by in-house housekeeping staff.
- Security: Separate rector and warden for both the boys and girls hostels. • Security with 48 CCTV's Cameras, wireless facility and advanced • techniques are provided for college and hostels separately.



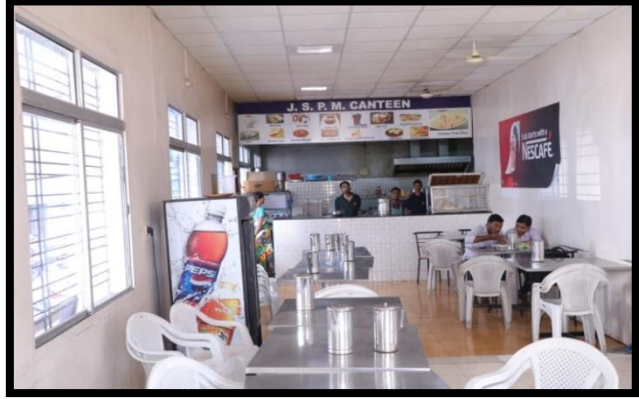
Boys Hostel



Girls hostel

Canteen

Institution has good canteen facility which provides healthy and hygienic food items. Mess facility also available.



Cafeteria

Auditorium

Institution hosts a well-maintained and air-conditioned auditorium admeasuring250 sq. mt with seating arrangement for 500 headcount. Furnished with high quality audio-visual facility and power backup provision, auditorium can be used for organizing seminars, workshops, conferences, guest lectures as well as extra-curricular activities.



Videoconferencing Facility

Institute has video conferencing facility, equipped with 4 Mbps dedicated line, 72 inches LCD T.V., movable camera and P.A. system. VC facility promotes collaborative studies and interdisciplinary research. The expert lectures delivered at central place can be broadcasted simultaneously across all the campuses of JSPM. Students from RSCOPR can take the benefit of this VC net facility by interacting with subject expertise.



Regression model

- Linear or first order regression model
- Method for determining the parameters of a linear system. The empirical model relating the response variable to the independent variables are described by the following equation:

$$Y = \beta_0 + \beta_1 X_1 + \beta_2 X_2 + \dots + \beta_n X_n$$

- Y - the response,
- X_1 and X_2 - the two independent variables,
- β_0 - the intercept of the plane,
- β_1 and β_2 - partial regression coefficients,

Bank /ATM

Institute provides Bank and ATM facility within the campus.



Parking

There is an ample parking space in the campus.



Transport

Institution offers transport facility to cater the need of staff and students.



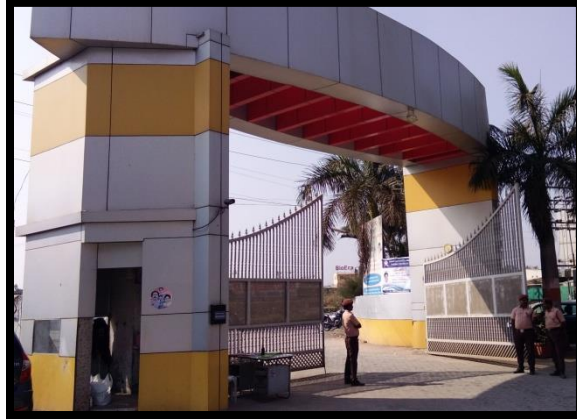
Medical Facility

Medical help desk is available 24 hrs in campus with provision of sick room and Ambulance for medical emergency.



CCTV / Security

Institution is secured through CCTV surveillance. Security with 48 CCTV's Cameras



Wi-Fi

The campus is having Wi-Fi facility.